



The Whole-Child Approach at Owlcotes Multi Academy Trust

At Owlcotes Multi Academy Trust (OMAT), we are committed to nurturing the whole child. We recognise our fundamental responsibility in building the strong emotional, social, and moral foundations that children need in order to thrive – not only during their school years, but throughout their lives.

We believe that education should develop children academically, socially, emotionally, and morally. This holistic view reflects our Trust's core values: compassion, resilience, inclusion, ambition, and respect. These values underpin all aspects of school life and are central to the personal development of every child in our care. Every child receives the care and support to achieve and thrive in school, be ready for their next stage of education and life beyond the classroom

Our personal development offer, The Whole-Child Approach, has been carefully designed to sit alongside a strong, coherent academic curriculum. It is fully aligned with national Personal, Social, Health and Economic (PSHE) education guidance and supports each school in meeting its statutory responsibilities under Keeping Children Safe in Education (KCSIE).

Through this approach, we aim to equip children with the knowledge, skills, and character traits they need to lead safe, healthy, fulfilling lives. Pupils are supported to:

- Form healthy, responsible and respectful relationships
- Understand and manage their emotions
- Build confidence, resilience and self-esteem
- Stay safe both online and offline
- Learn eagerly, reflect wisely, behave with integrity and cooperate consistently with those around them
- Recognise and report risks, harm and abuse
- Make informed choices about their physical and mental health
- Understand and respect diversity and difference
- Manage conflict and resolve disputes positively
- Achieve both academic and personal success
- Become responsible, active citizens in a modern, diverse society

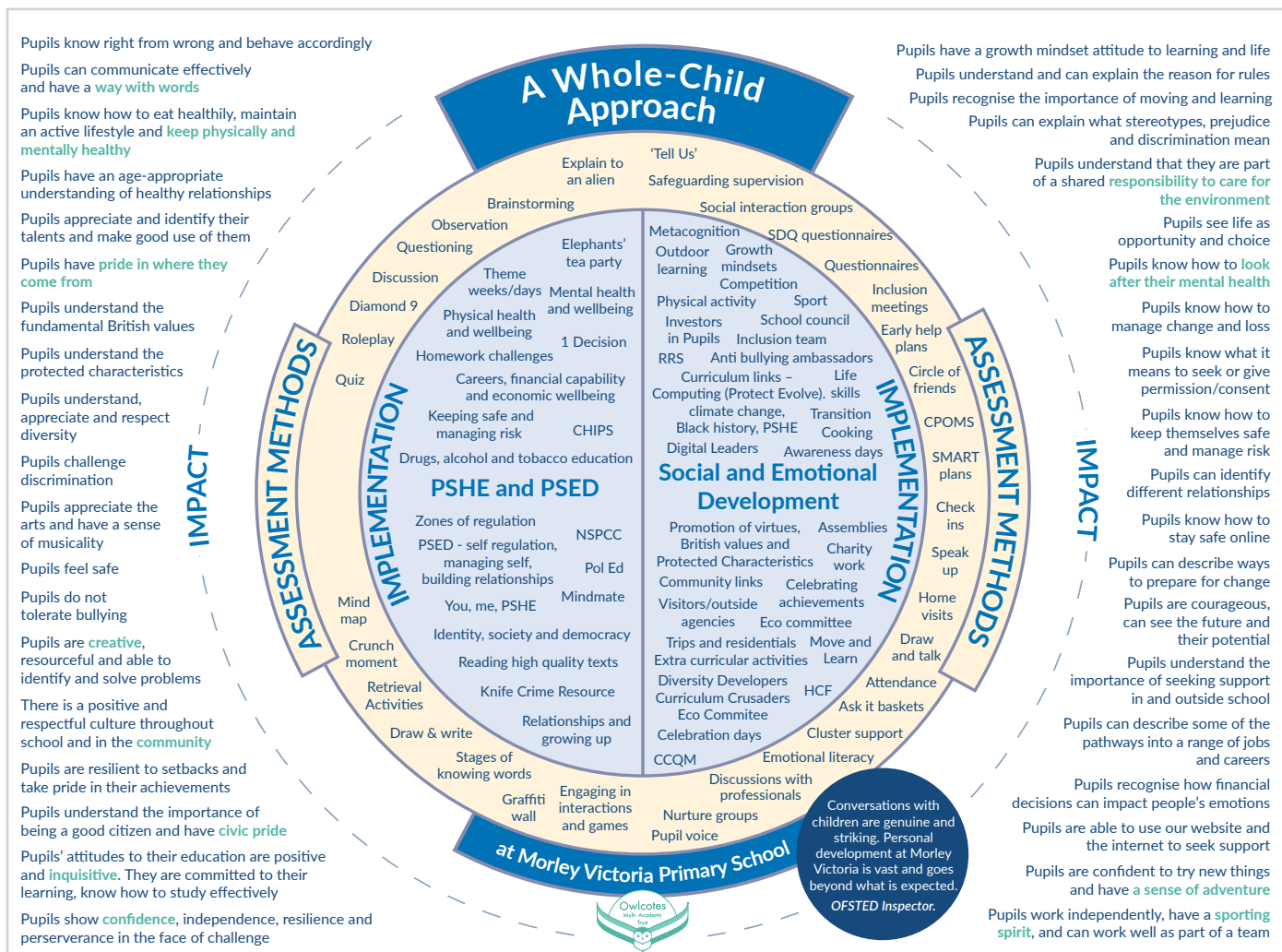
By embedding the principles of safeguarding, emotional literacy, and social responsibility into our curriculum and culture, we ensure that children are not only protected and supported but also empowered to navigate life confidently and ethically.

Through The Whole-Child Approach, we actively nurture the following key skills and attributes in all our pupils:

Confident Individuals				Responsible Citizens		
Motivation	Self-Regulation	Self-Awareness	Social Skills	Team work	Empathy	Know how to stay safe
Demonstrating goal orientated behaviours such as resilience and determination	Managing our emotions and behaviours to achieve our goals	Recognising our own emotions and values as well as our strengths and limitations	Forming positive relationships and dealing effectively with conflict. Seeking and giving help. Expressing emotions and attitudes appropriately	Forming and working collaboratively and effectively towards a shared goal	Understanding and caring to others diverse perspectives and experiences	Making ethical, constructive choices about personal and social behaviour

We recognise that each school within OMAT is unique. While our Whole-Child Approach provides a consistent framework across all our schools, it is also adapted and personalised to meet the specific needs of the children and communities each school serves. This ensures that our offer remains meaningful, relevant, and impactful. Furthermore, it is a living, evolving programme, shaped by current research, emerging societal issues, and the real-life experiences of our pupils and staff.

Each school has a whole child document that demonstrates their offer – see the example below:



We are proud that children who attend an Owlcotes school leave as well-rounded, emotionally secure, and socially capable young people, equipped to face the challenges of the modern world with confidence, integrity, and kindness.

Collectively the diagram below represents our offer.

